



MONTHLY MEMBERSHIP PROGRESS REPORT

District 27 E2

Results as of: 06/30/2019

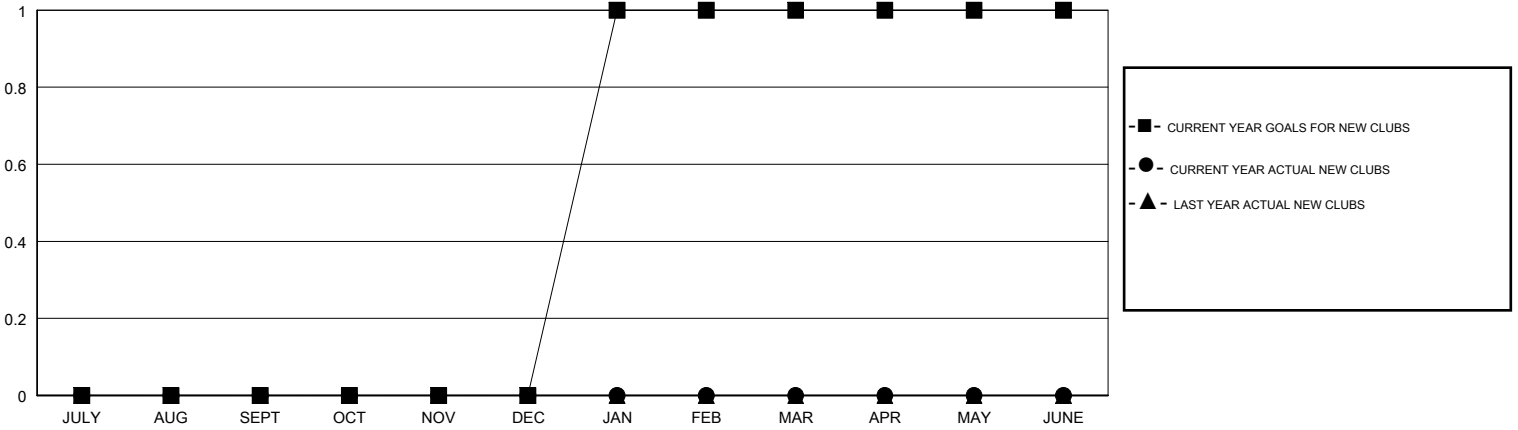
GMT: OPEN

LOCATION WISCONSIN

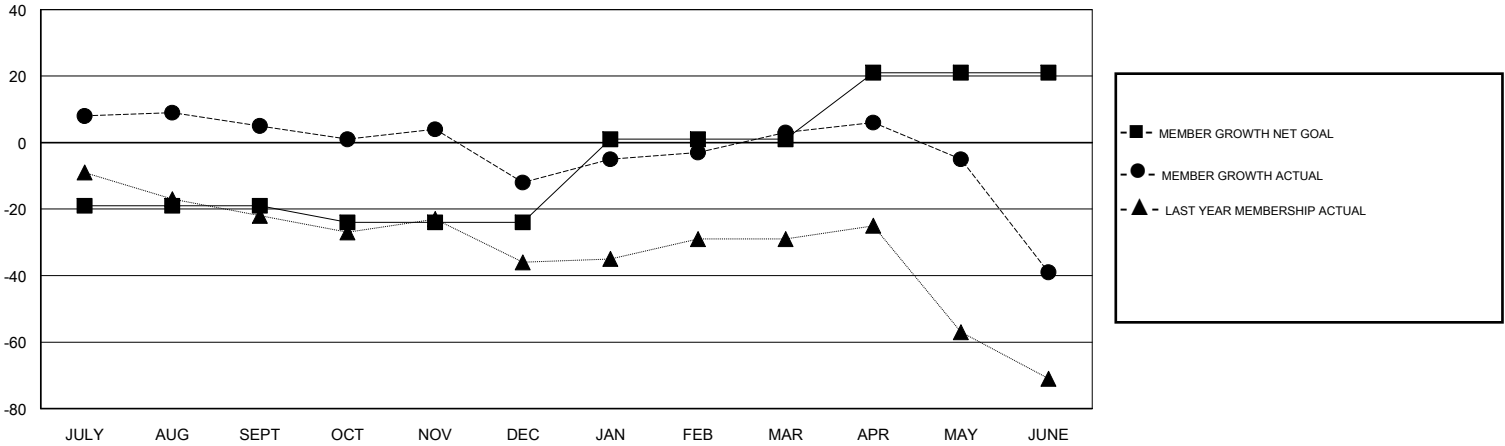
GMT CA

Clubs				Members			
RESULTS FOR 2018-2019				RESULTS FOR 2018-2019			
QUARTER	NEW CLUB GOAL	NEW CLUBS	DROPPED CLUBS	QUARTER	MEMBER GROWTH NET GOAL	MEMBER GROWTH ACTUAL	DROPPED MEMBERS ACTUAL (including transfers)
JULY/AUG/SEPT	0	0	0	JULY/AUG/SEPT	-19	30	23
OCT/NOV/DEC	0	0	0	OCT/NOV/DEC	-5	28	43
JAN/FEB/MAR	1	0	0	JAN/FEB/MAR	25	41	23
APR/MAY/JUNE	0	0	1	APR/MAY/JUNE	20	18	58

GOALS AND ACTUAL NEW CLUBS CUMULATIVE



GOALS AND ACTUAL MEMBERS CUMULATIVE



DROPPED CLUBS: 1	30 CLUBS OF 46 ADDED 1 OR MORE NEW MEMBERS	<u>GENDER DISTRIBUTION</u> MALE 1,277 (77.77%) FEMALE 365 (22.23%) Women Percentage Fiscal Year Goal: 25%
<u>DROPPED MEMBERS</u> DECEASED 26 CLUB CANCELLED 0 OTHER 121 TOTAL 147	CLICK HERE FOR CUMULATIVE MEMBERSHIP DATA	TOTAL FAMILY UNIT MEMBERS 253 FAMILY MEMBERS PAYING HALF DUES 127